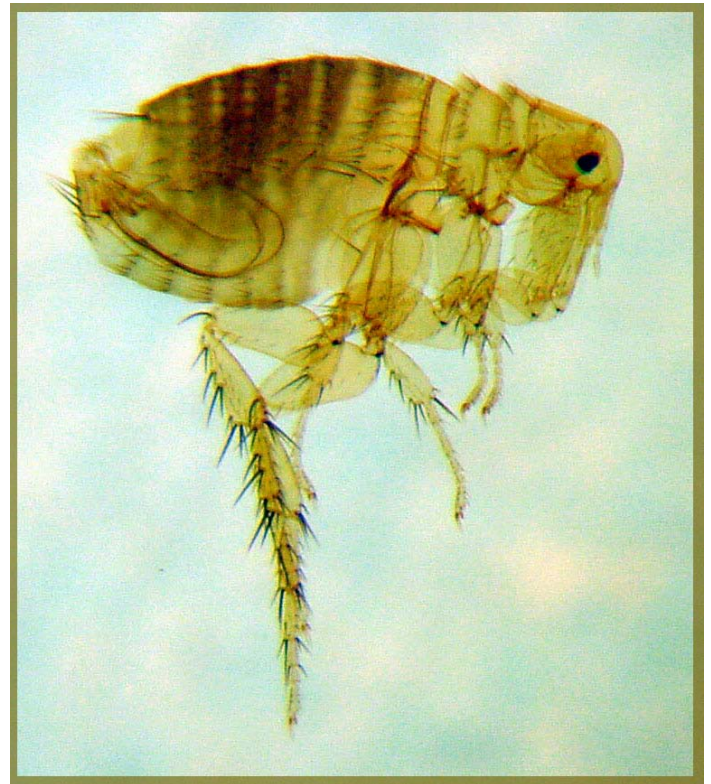
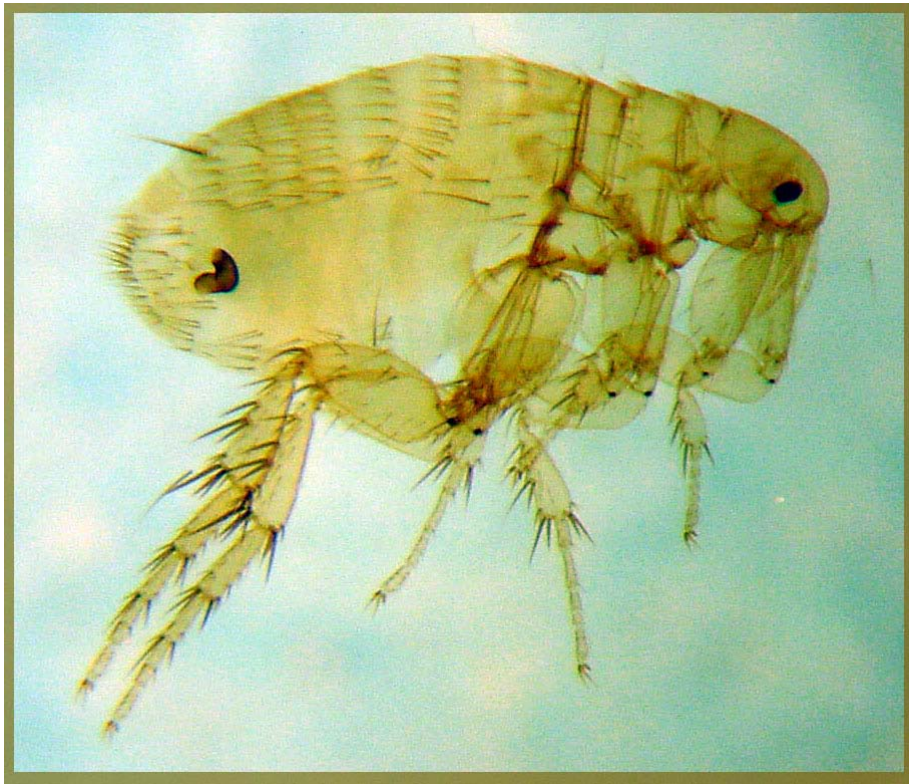


*Xenopsylla cheopis* female (left) and male (right).  
Note the absence of both genal and pronotal ctenidia.

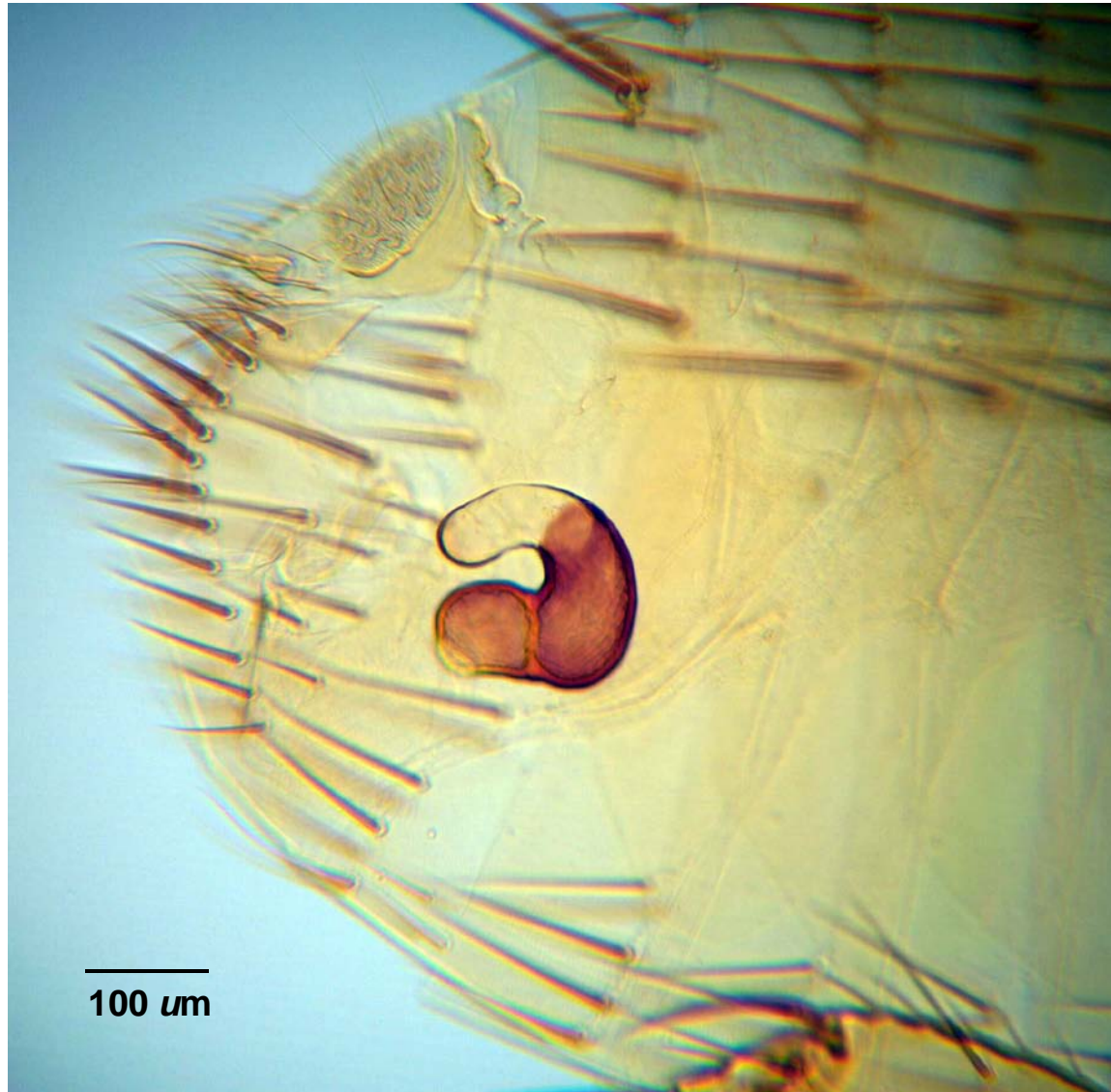


*Xenopsylla cheopis* male, head showing ocular bristle (arrow) at mid level of the eye (e). Note: compare with *Pulex*.

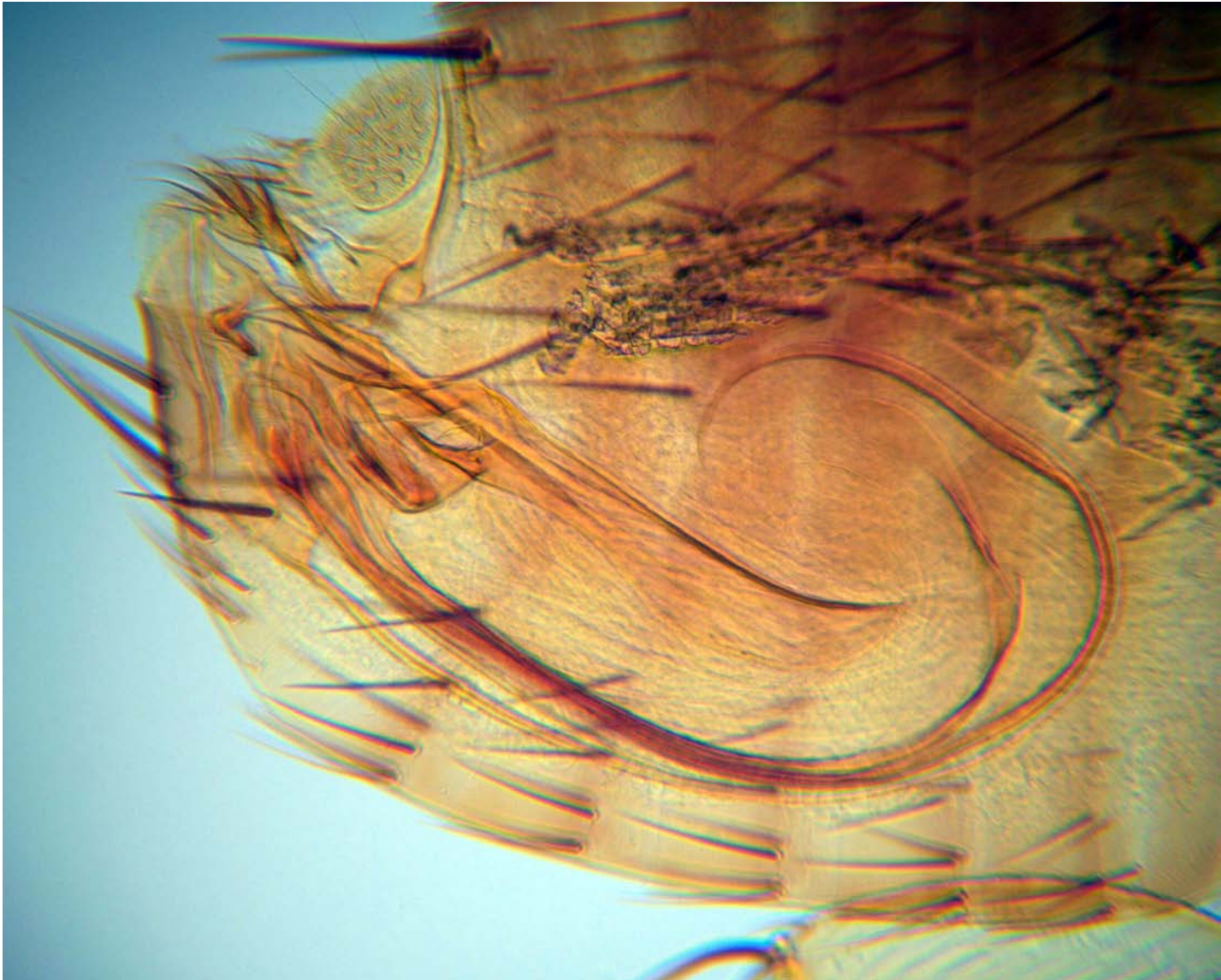




*Xenopsylla cheopis* female, spermatheca.

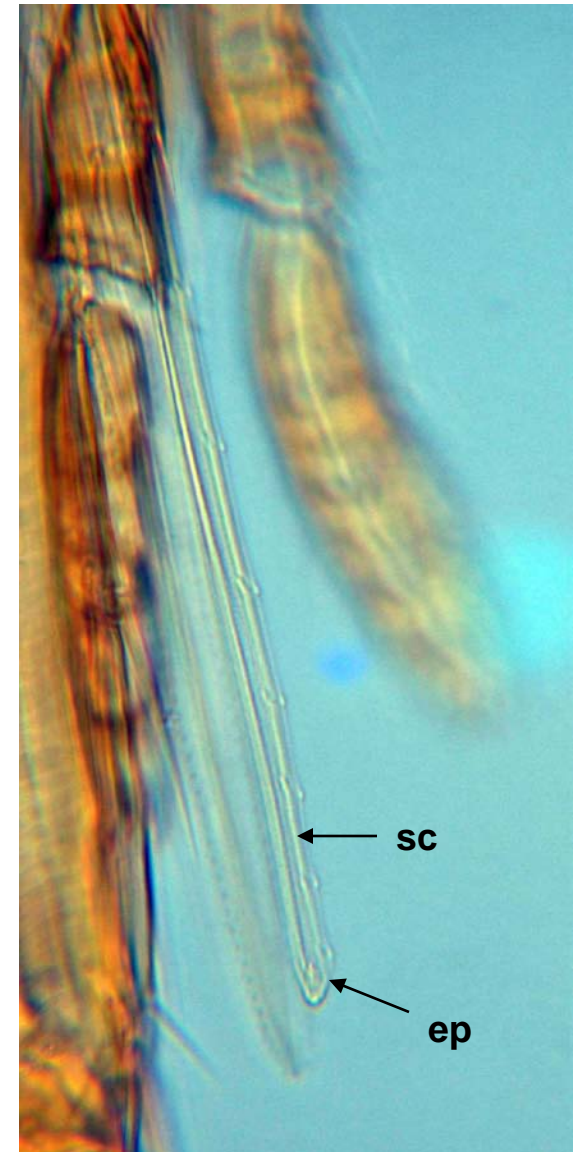
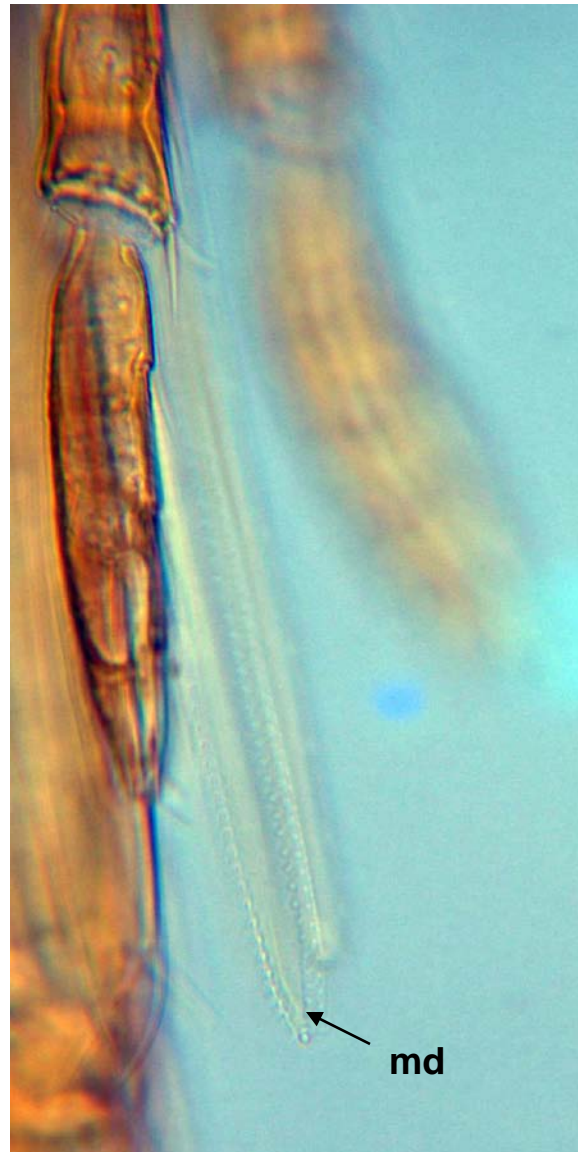
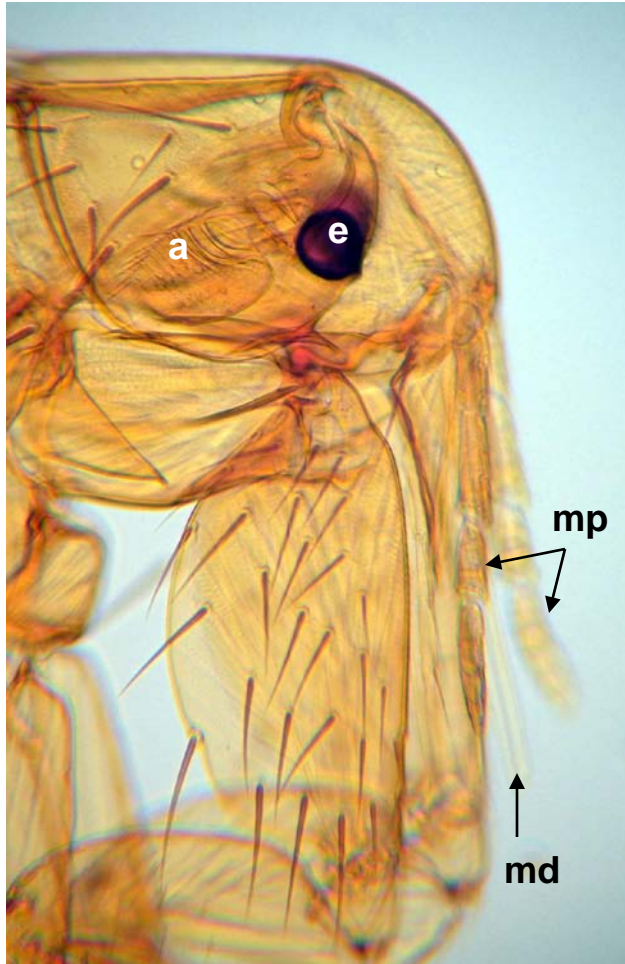


*Xenopsylla cheopis* male, genitalia.





*Xenopsylla cheopis* male, mouth parts. Legend: a, antenna; e, eye; ep, epipharynx; md, mandibles; mp, maxillary palps; sc, salivary channel.



*Xenopsylla cheopis* female, trachae, mid-abdominal segments.





*Xenopsylla cheopis* female, spiracular fossa (f); sensillum (s); trachea (t).

